

Disaster (Earthquake) Prevention Map of Sakahogi



- ◆ Maps of danger area at territory of sakahogi
- ◆ Ten Conditions for Alleviating Concern in an Earthquake
- ◆ List of Emergency Evacuation Items
- ◆ Map of areas with risk of landsliding and flooding

This guide is a translation of the map to prevent earthquakes in Japanese created in March 2008. The data presented are estimates only and do not guarantee that the catastrophe is as described. So you need to be prepared at any time.

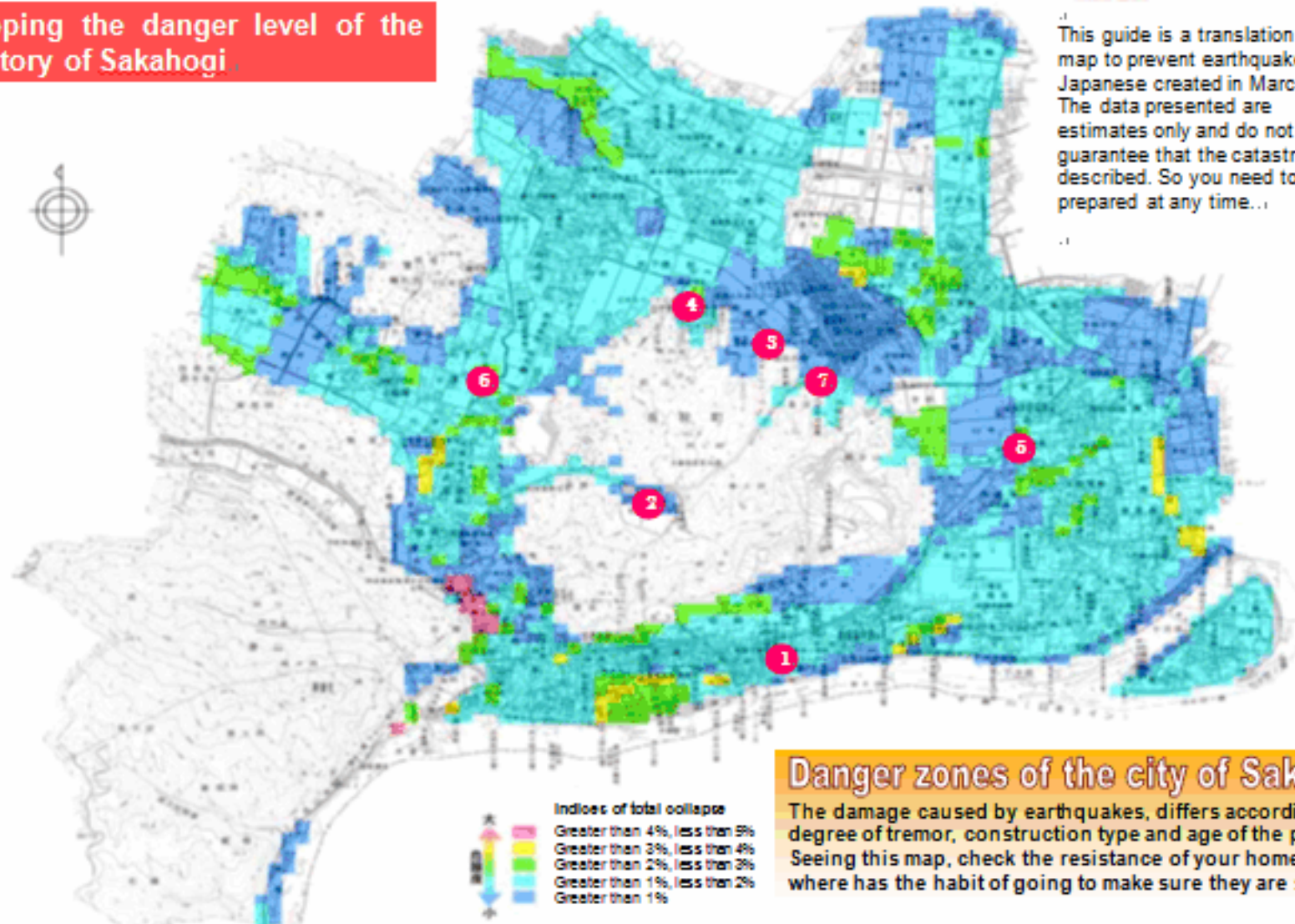


Sakahogi

Disaster (Earthquake) Prevention Map of Sakahogi

坂祝町地震防災マップ

Mapping the danger level of the territory of Sakahogi



Emergency Telephone Numbers

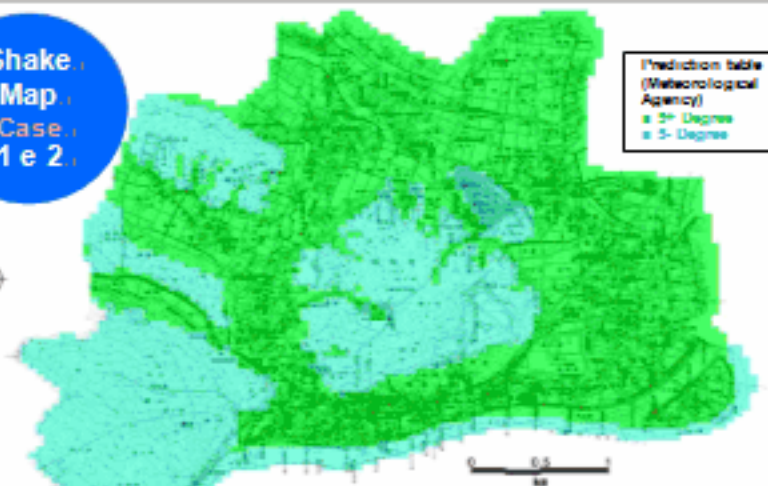
1. Keisatsu (Police)	110
2. Shobosho (Fire Department / Ambulance)	119
3. Sakahogi-cho Yakuba (Sakahogi Town Office)	0574-26-7111
4. Kamo Keisatsusho (Kamo Police Station)	0574-25-0110
5. Kamo Shobo (Kamo Fire Department / Ambulance)	0574-26-0190

Evacuation Centers

Name	Location	Telephone
① Sakahogi Elementary School	Tonikumi 35-2	0574-26-7105
② Sakahogi Junior High School	Fukagaya 146-1	0574-26-7512
③ Central Community Center	Kuroiwa 1260-1	0574-26-7151
④ General Welfare Center Sun Life	Kuroiwa 153-1	0574-27-1222
⑤ Eastern Hall	Sakakura 770-8	0574-25-1991
⑥ Western Hall	Fukagaya 370-1	0574-25-1450
⑦ Sakahogi Kindergarten	Kuroiwa 20-1	0574-26-7913

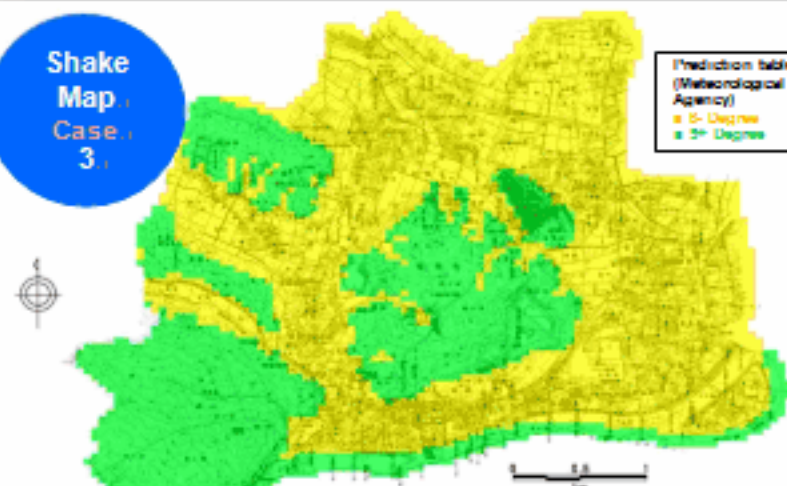


Shake Map Case 1 & 2



* The above map depicts the magnitude of the quake in the case of the Tokei earthquake (1) and the earthquake of tectonic plates of Okhotsk and Yoro (2). * Buildings located on the land will be affected by aftershocks above 3+ degrees. * There is a possibility of some buildings have partial damage.

Shake Map Case 3

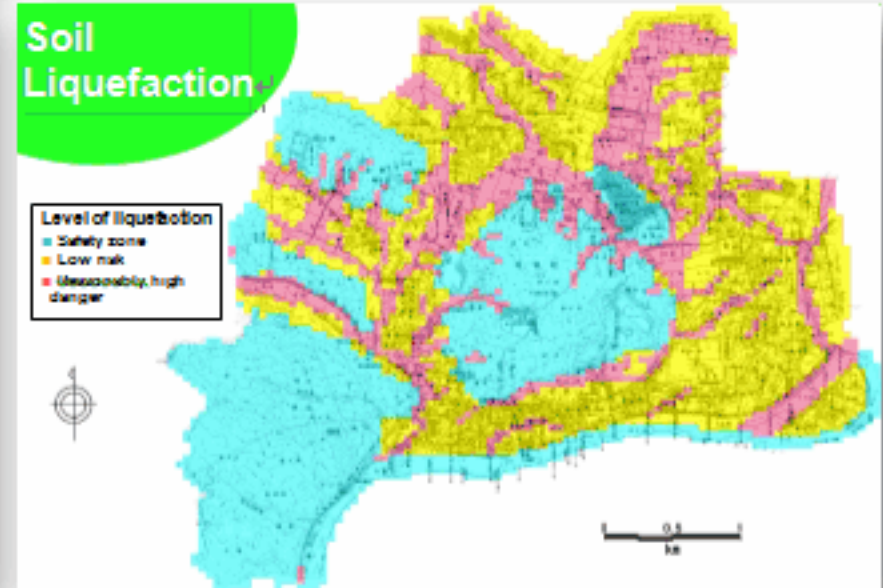


* The above map depicts the magnitude of the tremor of the earthquake of 6.5 degrees. * Although considered a low probability of happening, it so happen, will be felt the tremors of 3+ 5- degrees. * Construction of low resistance may fall.

Soil Liquefaction

Level of liquefaction

- Safety zone
- Low risk
- Unreasonably high danger





Ten Conditions for Alleviating Concern in an Earthquake



1. First of all, protect yourself

If you are at home or at school, hide under a table, desk, or other study furniture and wait for the shaking to stop.



2. Turn gas (stoves, heaters) on quickly

If you were cooking or otherwise had the gas on, turn it off immediately and turn the gas off at the main. (Be careful not to burn yourself with oil or boiling water.)



3. Secure an exit

Earthquake tremors can cause doors to buckle and become stuck. If an earthquake occurs, open your front door to secure an exit.



4. Extinguish fire immediately

If a fire should occur, shout loudly for your neighbors to come and help and work together to begin to extinguish the fire.



5. Do not panic and rush outside

If you panic and rush outside, you could be injured by falling bricks and signs, etc. Stay calm.



6. Do not go near narrow streets, precipices or rivers

Avoid places where concrete block walls could fall, precipices, or rivers.



7. Walk to the evacuation center and minimize belongings

When you evacuate, walk to the evacuation center. Carry the minimum quality of items quantity of items with you in a rucksack or other bag on your back.



8. Work with everyone to perform emergency relief activities

Many people are injured when there is a large earthquake. Neighbors need to help each other in performing emergency relief activities.



9. Obtain accurate information

Pay attention to information from the Town Office and information broadcast on TV/radio. Do not be misled by false or inaccurate information.



10. Talk about the possibility of disasters occurring

At home, school, and work, talk about measures to take if a disaster occurs, on a routine basis.

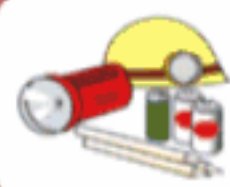


List of Emergency Evacuation Items



Portable radio

A small and lightweight radio that picks up both AM and FM



Flashlight

Preferably one for each family member. Do not forget to pack extra batteries and light bulbs.



Valuables

Cash, bank passbook, personal seal, health insurance card, etc.



Emergency provisions

Biscuits, canned food, and other food that does not require cooking; cup noodle; water (PET bottles), and if you have an infant, powdered milk.



Emergency supplies

Disinfectant and ointment for treating wounds; bandages and band-aids; and cold, digestive, and other medicines. If you take medicine normally, do not forget to pack extra amounts.

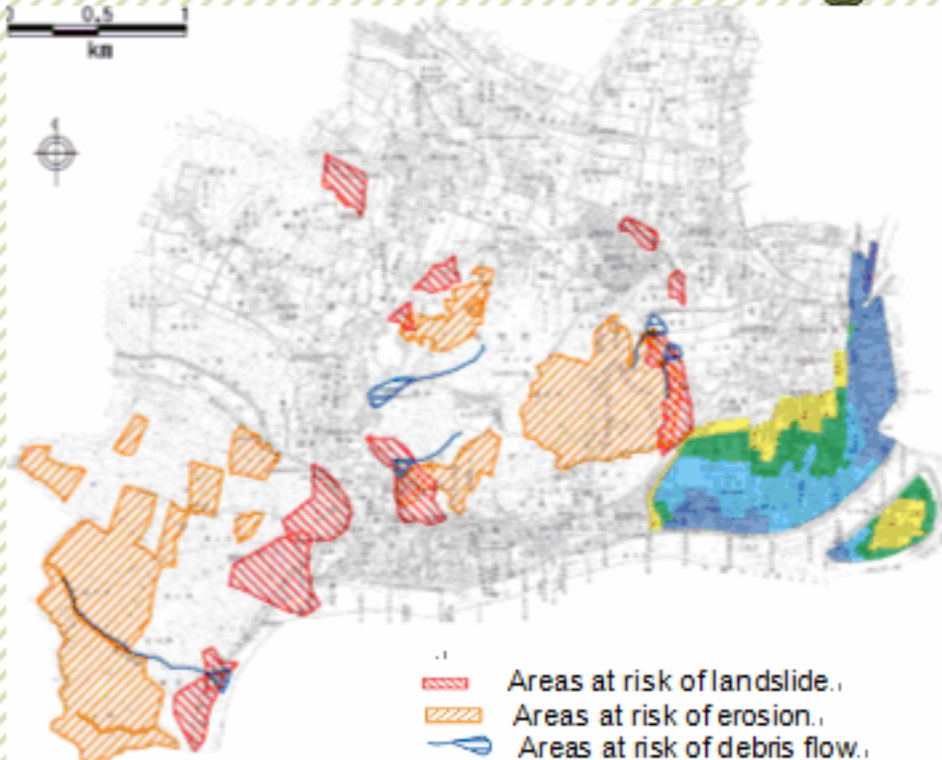


Other

Clothing, hygiene products (towels, tissues, soap, etc.) lighters, knives, gloves, helmets, blankets, sanitary products, disposable diapers, baby bottles, etc.

Landslide and flooding

0.5 1
km



Flood Stage

浸水想定区域



For the sake of shaking caused by earthquakes, the possibility of skidding slopes in areas considered at risk of landslides is high. Those who live close to these areas should be on the alert...

- Areas at risk of landslide.
- Areas at risk of erosion.
- Areas at risk of debris flow.

How to check if your family is well in case of disasters, using the Disaster Emergency Message Dial (171)

Record the message:

- ① Dial the 171 number and hear guidance in Japanese...
- ② Select option number 1...
- ③ Dial the number of a person that you want to contact, starting with the area code...
 - If you are inside the disaster-stricken area, please dial the telephone number of your house...
 - If you are outside the disaster area, dial the telephone number of family stricken...
- ④ Record the message...



Play back the message:

- ① Dial the 171 number and hear guidance in Japanese...
- ② Select option number 2...
- ③ Dial the number of a person that you want to contact, starting with the area code...
 - If you are inside the disaster-stricken area, please dial the telephone number of your house...
 - If you are outside the disaster area, dial the telephone number of family stricken...
- ④ Play back the message...

119.
Rescue.

To communicate the problem to the rescue or police, say with calmly:

“**Kaji desu**” in case of fire or “**Kyukyu desu**” in case of medical emergency...

“**Watashi wa** (place) **njimasu**” to communicate where you are.

110.
Police.

“**Watashi no namae wa** ... (name) ... **desu**,” to communicate your name...

“**Denwa bangou wa** ... (telephone number) ...,” to say your phone number...